

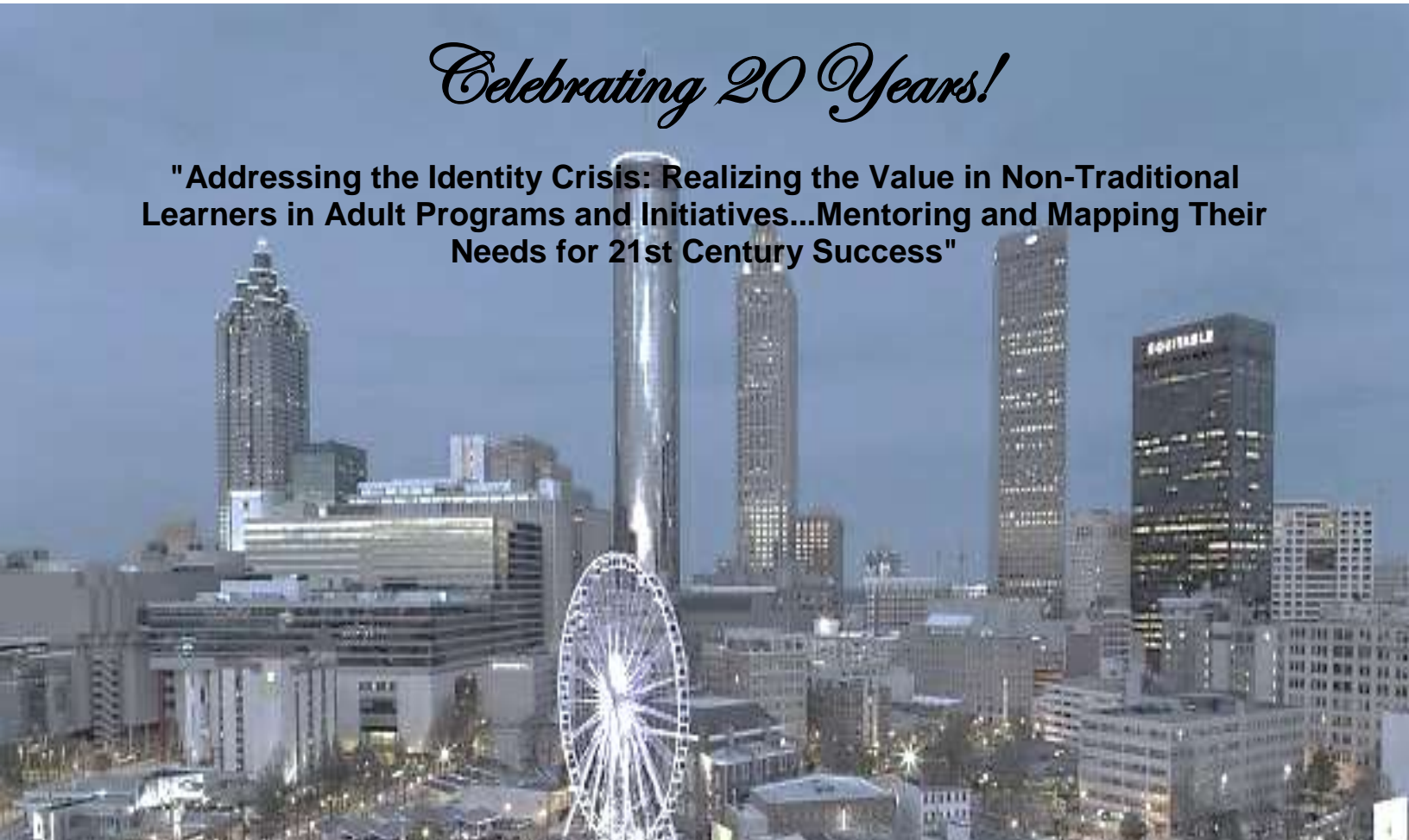


ANTSHE
20TH CONFERENCE
Supporting Nontrads for 20 Years!

THE ASSOCIATION FOR NON-TRADITIONAL
STUDENTS IN HIGHER EDUCATION ANNUAL
CONFERENCE

Celebrating 20 Years!

"Addressing the Identity Crisis: Realizing the Value in Non-Traditional Learners in Adult Programs and Initiatives...Mentoring and Mapping Their Needs for 21st Century Success"



SPONSORSHIP OPPORTUNITIES

Contact us today (301)992-2901 or visit us at: www.myantshe.org



2017 Strategic Partners:



2017 ANTSHE Annual Conference

Kennesaw State University, Kennesaw, GA

Celebrating 20 Years!

"Addressing the Identity Crisis: Realizing the Value in Non-Traditional Learners in Adult Programs and Initiatives...Mentoring and Mapping Their Needs for 21st Century Success "

23-25 March, 2017 Conference | Kennesaw State University, KSU Center, Kennesaw, GA

The ANTSHE Conference 2017 is coming to the Atlanta-Metro Area. The conference will be a celebration of ANTSHE's 20 Years of providing support, resources, and scholarships to non-traditional students across the United States. Join us for three amazing days of engaging sessions, intense networking, and celebration. Collaborate with leaders of adult learner programs and organizations whose focus is adult learner success, and get exposure to innovative ideas and leadership to help you and/or your adult learner program be successful.

Top leaders in higher education know how to retain non-traditional students and have successful completion rates in their adult learner programs. Many of these leaders are eager to share their experiences with ANTSHE and other non-traditional institutions, programs, and organizations that support non-traditional students. The ANTSHE Conference attendees gain a wealth of knowledge and experience opportunities to learn about innovative techniques, shared program successes, and to network with other institutions and organizations and walk away empowered, and with a renewed sense of ownership for their adult learner program and how to improve them.

Generate a buzz before, during and after the ANTSHE Conference 2017 by sponsoring one or more of these exclusive opportunities.



Sponsorship Opportunities

Addressing the Identity Crisis: Realizing the Value in Non-Traditional Learners in Adult Programs and Initiatives...Mentoring and Mapping Their Needs for 21st Century Success



SPONSORSHIP BENEFITS

Platinum level Sponsorship: \$7,500

- Three (3) Full Conference Registrations
- Guaranteed keynote speaking slot on 1st day of conference, executive level speaker recommended and approval of speaker is required.
- Keynote Broadcast – Your keynote presentation will be broadcast live on the ANTSHE website and made available within 24 hours, maximizing your ability to promote your session to a broader, non-attendee audience. A custom URL with an embedded live player displaying your company logo will be made available for you to promote your keynote.
- Track Session Speaking/Presentation Slot – An industry-related presentation delivered by your company at a scheduled session within the Conference agenda. (ANTSHE Conference approval of speaker and topic required)
- Recognition as a Platinum Sponsor & Logo placement on all conference bags
- Complete sponsorship of President's Welcome Reception
- Recognition in newsletter and published in *The Nontrad Journal*
- Sponsorship includes all marketing: on-site signage, ad opportunities, on-site presence, logo on presentation during conference events, title to proprietary area, access to mailing list and database, logo on collateral, logo on media buy.
- Sponsor banners at entrance of Expo area
- Complimentary conference program premium position ad (Note: there are a limited number of premium position ads, and they are available on a first come, first served basis. If premium position ads are not available, two full page ads will be substituted.)
- 2 Exhibit tables and chairs
- Recognition in e-mails leading up to the conference.
- Opportunity to provide an insert in Conference Bags– Insert a creative branded giveaway item in the conference bag to get the attention of all conference attendees distributed at registration.
- Special sponsor ribbon for all attending company members
- Space on the sponsor table for organization flyer or brochure

Gold level sponsorship: \$5,000

- Two (2) Full Conference Registration
- Track Session Speaking/Presentation Slot – An industry-related presentation delivered by your company at a scheduled session within the Conference agenda.
- Lunch sponsor (non-exclusive)
- Complimentary conference program full page ad
- One complimentary exhibit space
- Sponsor recognition on all official conference signage
- Sponsor recognition in all official conference publications and promotions
- Opportunity to provide an Insert in Conference Bags– Insert a creative branded giveaway item in the conference bag to get the attention of all conference attendees distributed at registration.
- Banner ad on conference website landing page
- Special sponsor ribbon for all attending company members
- Space on the sponsor table for organization flyer or brochure

Sponsorship Opportunities

Addressing the Identity Crisis: Realizing the Value in Non-Traditional Learners in Adult Programs and Initiatives...Mentoring and Mapping Their Needs for 21st Century Success

Silver level sponsorship: \$3,000

- One (1) Full Conference Registration
- Break Sponsor
- Complimentary final program half page ad
- Complimentary exhibit space
- Sponsor recognition on all official conference signage
- Sponsor recognition in all official conference publications and promotions
- Opportunity to provide informational collateral in the registration materials and bags
- Logo on conference website landing page
- Special sponsor ribbon for all attending company members
- Space on the sponsor table for organization flyer or brochure

Bronze level sponsorship: \$1,000

- One half-price conference registration
- Complimentary quarter page ad in conference program
- Logo recognition on all official conference signage
- Complimentary exhibit space
- Logo recognition on PPT during keynote sessions
- Recognition in all official conference publications and promotions
- Opportunity to provide informational collateral in the registration materials and bags
- Special sponsor ribbon for all attending company members
- Space on the sponsor table for organization flyer or brochure

Friend sponsorship: \$500

- Sponsor name badges for attendees
- Named as a sponsor in the conference program
- Logo recognition on PPT during keynote sessions

Individual Sponsorship Opportunities

Individual sponsorship opportunities are also available in addition to the premium sponsorship packages.

President's Reception & Meet the Authors Event: \$2,000

Your organization's logo and signage will be placed at the reception, and you will have the opportunity to address the group at the start of the reception. Organization name/logo will be placed in the conference program and website.

Lunch (Thursday, Friday and/or Saturday): \$1,500 each

Your organization name will be placed on all advertising associated with the conference and events. Organization name/logo will be placed on napkins and table placards, in the conference program and website and announced during lunch. May choose to sponsor a Food for Thought lunch. May sponsor one or all three lunches.

Refreshment Breaks: \$500 each

This includes sponsor signage on the tables and in the general area of each break station. Organization name/logo will be placed in the conference program and website.

Registration Bags: \$650

Your organization's logo will be placed on each registration bag and also includes (1) one Bag Insert. An insert can be a flyer, keychain or other item you would like all the conference attendees to have. You would need to provide ANTSHE with the insert to be placed in all registration bags.

Conference Dinner: \$3,000 (Friday)

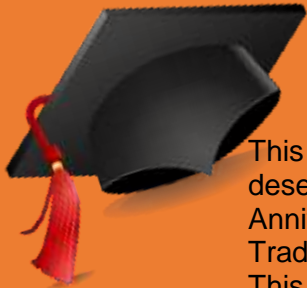
This includes sponsor signage on the tables and in the general reception area as well as logo printed on paper napkins. Organization name/logo placed in the conference program, website, and recognition during dinner. May sponsor one or both dinners.

20TH ANNIVERSARY SPONSORSHIP OPPORTUNITIES



20/20 Campaign: \$1,000 each

How many non-traditional students will you sponsor?



This is a unique opportunity to sponsor a scholarship for a deserving non-traditional student! In celebration of our 20th Anniversary, our goal is to support a minimum of 20 Non-Traditional Students by providing at least 20 Scholarships! This is a huge effort that will take the support of our members and generous supporters like yourself. Have you ever wanted to do something that made you feel like you were doing something positive for someone else? There's no time like now to help sponsor a scholarship to send pay for tuition for a non-traditional student to attend or continue on their educational journey.

In the past 20 Years, ANTSHE has supported non-traditional students and has raised monies to provide scholarships to hundreds of dedicated and determined non-traditional students. Adult learners face many challenges when it comes to returning to college. Finding the money to pay for college shouldn't be one of them! There are many scholarships available for traditional students, but when it comes to providing adult learners who are supporting a family, are laid off from work or who are veterans, there aren't many options for college funding. This your chance to do something special for a non-traditional student. Sponsor an ANTSHE Scholarship during this 20/20 Campaign and meet some of the non-traditional students like the ones pictured that you are sponsoring at the 2017 ANTSHE Conference in Kennesaw



www.myantshe.org/2017Conference

ATLANTA-METRO AREA KENNESAW STATE UNIVERSITY

MARCH 23 - 25

CONFERENCE SCHEDULE

Expo Hours

Thursday, 23 March
9:00AM – 6:00PM

Friday, 24 March
8:00AM – 5:00PM

Saturday, 25 March
8:00AM – 4:00PM

Educational Sessions

Conference

Thursday, Friday & Saturday,
23-25 March

Thursday 9:00AM-6:00PM

Friday 8:00AM – 5:00PM

Saturday 8:00AM-5:00PM

Friday Lunch– “Food For Thought”

(Informal, focused topics during lunch, led by subject matter experts). Special moderator

Exclusive Panel Discussion of College Presidents & Chancellors

Guest Mediator – Dr. Belle Wheelan, President of the Southern Association of Colleges and Schools Commission on Colleges

Friday, 24 March

2:00PM-3:30PM

Roundtable Discussions

Saturday, 24 March

10:00AM – 11:30AM

Networking Events

*Make
Connections
that count*



President’s Welcome Reception including a Meet the Authors Event

Thursday, 23 March

6:00PM – 8:00PM

Registration

Thursday, 23 March

7:00AM-10:00AM

Open House/Expo & Sponsors

Thursday, 23 March

9:00AM-10:00AM

The ANTSHE Conference Expo gives you an opportunity to connect with industry focused leaders. See how ANTSHE Conference exhibitors offer you the latest technological solutions, provide hands-on learning opportunities and demonstrate how they can help you better your organization. Refreshments and breakfast selections provided.

Ladies Tea@2

Saturday, 24 March

2:00PM-3:00PM

Special Guest Speaker

*Dates and times are subject to change



20th Annual ANTSHE Conference 2017

Kennesaw State University – Kennesaw, GA

March 23-25

SPONSORSHIP REGISTRATION FORM

I. Contact Information (Please type or print clearly)

Company/Organization _____

How the Company Name should appear on printed materials/electronic media including the Learning Journal/Program _____

Address: _____

City: _____ State: _____ Zip: _____

Contact Person: _____ Phone Number: _____

Email: _____ Second Contact Person: _____

Phone Number: _____ Email: _____

II. SPONSORSHIP PURCHASED

Which Sponsorship Package(s) are you reserving? _____

Is your institution/organization an ANTSHE member? _____ Yes _____ No

Cost of Sponsorship(s): _____

TOTAL COST: \$ _____

III. PAYMENT INFORMATION

Please provide credit card information with this completed contract. Reservations will not be accepted without credit card information.

Name on credit card: _____

Amount to be charged: \$ _____

_____ Please charge my credit card now for the amount above.

_____ I will send a check. I understand my credit card will be charged if payment is not received by February, 28, 2017.

Payment Type: _____ American Express _____ MasterCard _____ Visa _____ Check

Note: Check payments must be received by ANTSHE by February 1, 2017.

Credit card number: _____

Billing Address: _____

Expiration Date: _____ Security Code: _____

Signature: _____

The ANTSHE Conference 2017 will take place from March 23 to 25 at the KSU Center at Kennesaw State University. We will feature an Expo located at the East Entrance Hall and Fountain Area. Don't miss this chance to be a part of the ANTSHE Conference 2017! Sponsorships and exhibit sales are underway. Don't delay as exhibit space will sell out quickly and space is limited!

Contact one of our conference organizers today to discuss your event goals. We will work with you to create a presence at ANTSHE Conference that meets your goals and budget. Come and connect with ANTSHE Conference exhibitors and see how they offer you the latest technological solutions, provide hands-on learning opportunities and demonstrate how they can help you better your organization and adult learner programs.

Expo Hours

Thursday, 23 March
9:00AM – 6:00PM

Friday, 24 March
8:00AM – 5:00PM

Saturday, 25 March
8:00AM – 4:00PM

ANTSHE Conference 2017 sponsors are given first priority on exhibit location. Space is limited and is available on a first-come/first-serve basis.

Exhibit includes:

- 1 -6' table (unless otherwise noted in the sponsorship packages)
- 2 chairs
- Electricity available upon request
- Complimentary Internet access

For more information about the expo or about exhibitor spaces, please call 301-992-2901 or email president@antsheboardofdirectors.org .

Exhibitor Set-Up and Removal

Set-Up times are Wednesday, March 22 from 6:00pm-8:00pm and/or Thursday, March 23 from 7:00am-9:00am (All exhibitors **MUST** be set up no later than 9:00am Thursday, March 23)

Tear-Down time is 4:00pm-6:00pm, Saturday, March 25 (All exhibits **MUST** be completely removed by 6:00PM) *Times are subject to change

Price:

Exhibit Table 1 Exhibitor Space \$600 (Additional table spaces \$150/additional table)

Please note *All cancellations must be made by email to president@antsheboardofdirectors.org. Cancellations made after March 15, 2017 will be charged a \$50 cancellation fee for each exhibit space reserved. No refunds after March 15, 2017.

Advertising for the ANTSHE Conference 2017 Program is now available.

Full Page.....\$350

Half Page.....\$175

Quarter Page.....\$100

Premier Advertising Opportunities:

Inside Front/Inside Back Cover (Full Color).....\$500

(All advertisements will be printed in black and white unless otherwise noted)

Digital files are recommended for advertisements and PDF files are preferred. Advertisements should be in high resolution and all fonts must be embedded. Ads should be emailed to: communications@antsheboardofdirectors.org.

ANTSHE reserves the right to determine if advertisement is related to the business or individual purchasing the advertisement.

Deadlines

Space Reservation: January 23, 2017

Artwork closing date: January 31, 2017

KSU Center, 3333 Busbee Drive, Kennesaw, GA 30144

